

THE FUTURE IS ON®

VISCOR | a **LEVITON**®
company

Certolux LED Product Guide

 **CERTOLUX**
by VISCOR





 **CERTOLUX**
by VISCOR

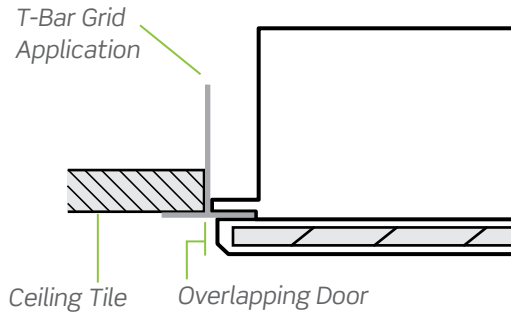
Certolux specializes in Cleanroom, Medical, Spray Booth, and Vandal Resistant luminaires that are extremely durable and built to withstand harsh environments. Cleanroom luminaires are designed to preserve air seals, prevent leakage of contaminants, and allow for easy maintenance. Medical luminaires are engineered for areas with many stringent requirements and fill multiple roles, like a combination of ambient and exam lighting. Vandal resistant luminaires incorporate several features that are suited for security facilities that endure abuse and tampering. All Certolux luminaires are specifically engineered to provide optimal lighting solutions for controlled environments.

FIXTURE TYPES

Series	Mounting Type	Ceiling Type	
CR: Cleanroom MD: Medical VR: Vandal Resistant SAF: Superseal Cleanroom	G	Recessed Mount Grid (Overlapping Door)	T-Bar Grid
	IG	Recessed Mount Inset Door Grid	T-Bar Grid
	F	Recessed Mount Flange (Overlapping Door)	Hard Ceiling
	IF	Recessed Mount Inset Door Flange	Hard Ceiling
	UI	Recessed Mount Universal Inset Door (Grid or Flange)	T-Bar Grid / Hard Ceiling
	UO	Recessed Mount Universal Overlapping Door (Grid or Flange)	T-Bar Grid / Hard Ceiling
	S	Surface Mount (Overlapping or Clamshell Door)	Surface
	IS	Surface Mount Inset Door	Surface
	C	Corner Mount (Overlapping or Clamshell Door)	Surface
	R	Rear Access Recessed Mount Flange (Overlapping Door)	Hard Ceiling

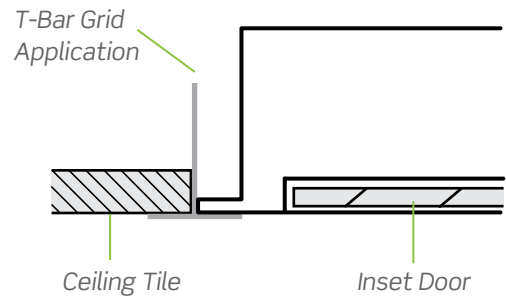
RECESSED MOUNT GRID (G)

A recessed luminaire fits in a T-bar grid ceiling, with a door that overlaps the T-bar.



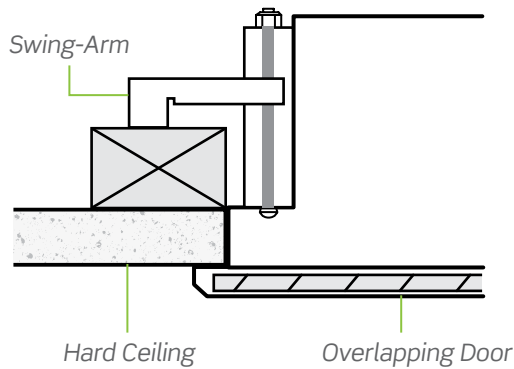
RECESSED MOUNT GRID INSET DOOR (IG)

A recessed luminaire fits in a T-bar grid ceiling, with an inset door that lays flush with the fixture and ceiling.



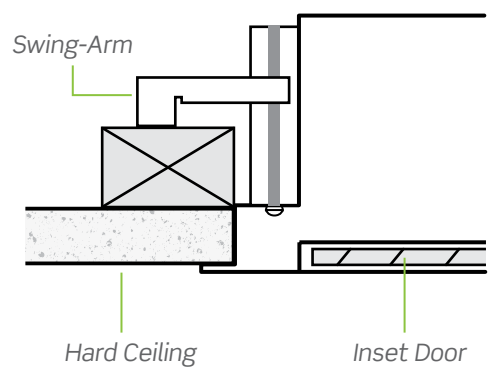
RECESSED MOUNT FLANGE (F)

A recessed luminaire with a protruding flat rim, known as a flange, prevents it from going further into the ceiling. The fixture's door overlaps the ceiling and is intended for applications without a T-bar grid.



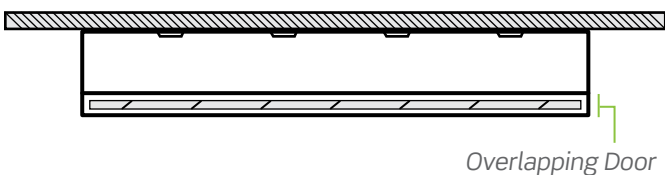
RECESSED MOUNT INSET DOOR FLANGE (IF)

A recessed luminaire with a protruding flat rim, known as a flange, prevents it from going further into the ceiling. The fixture features an inset door that lays flush with the flange and is intended for applications without a T-bar grid.



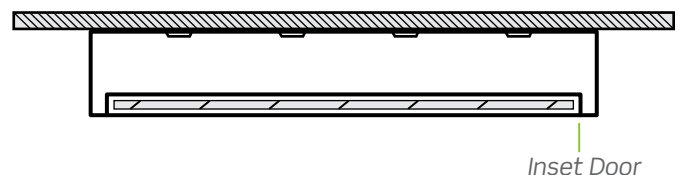
SURFACE MOUNT (S)

A luminaire that sits on top of the surface. Surface luminaires come standard with an overlapping door.



SURFACE MOUNT INSET DOOR (IS)

A luminaire that sits on top of the surface and features an inset door that lays flush with the fixture.

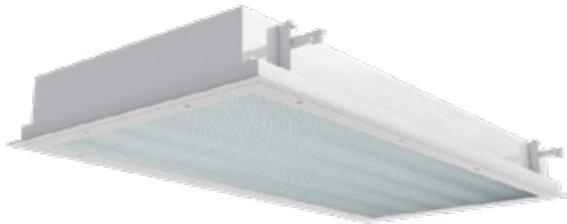


MEDICAL

Certolux provides specialized medical luminaires for a wide range of healthcare applications. From low output ambient solutions to high output exam lighting, Certolux luminaires provide impeccable performance to meet all your needs. Our medical luminaires offer premium quality while providing additional overall savings through lower energy consumption and decreased servicing requirements.

All recessed LED Medical luminaires are IC-Rated.

Not all certifications are standard. Consult Spec Sheet for configuration options.



MD1U LED Medical 1

Recessed Universal Flanged
Inset or Overlap Door



Specifications

Size	1x4, 2x2, 2x4
CRI	80 - 89
Color Temp.	3000K, 3500K, 4000K, 5000K
Lumen Output	3,500 - 24,000
Input Wattage	32w - 198w

Applications

- Surgical Suites
- Hospitals
- Patient Beds
- Doctor Examination



MD1-4104 Medical Patient Ambient LED

Recessed Flanged, Recessed
Grid, or Surface Mount

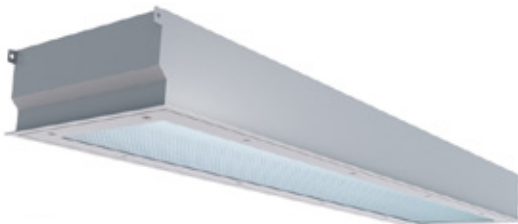


Specifications

Size	2x2, 2x4
CRI	80 - 89
Color Temp.	3500K, 4000K
Lumen Output	3,300 - 7,800
Input Wattage	36w - 75w

Applications

- Palliative Care
- Hospital



MD1IG-4150 Medical Asymmetric Exam LED

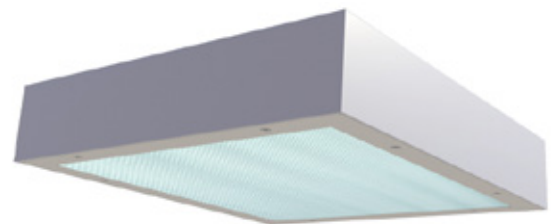
Recessed Grid Inset Door

Specifications

Size	1x4
CRI	80 - 89
Color Temp.	3500K, 4000K, 5000K
Lumen Output	5,000
Input Wattage	46w

Applications

- Patient Bed
- Doctor Examination



MD1IS-3799 Medical Surgical Symmetric /Asymmetric LED

Surface Mount Inset Door



Specifications

Size	2x2, 2x4
CRI	80 - 89
Color Temp.	3500K, 4000K, 5000K
Lumen Output	5,200 - 15,000
Input Wattage	47w - 147w

Applications

- Patient Beds
- Doctor Examination



MD2-3461
**Medical Patient Ambient/
 Exam LED**

Recessed Grid, Recessed Flange, or Surface Mount

Applications

- Patient Bed
- Doctor Examination

Specifications

Size	2x2, 2x4
CRI	80 - 89
Color Temp.	3500K, 4000K
Lumen Output	6,000 - 18,800
Input Wattage	72w - 228w



MD2IG-4200
**Medical Patient
 Ambient/Exam LED**

Recessed Grid Inset Door

Applications

- Patient Beds
- Doctor Examination

Specifications

Size	48"
CRI	80 - 89
Color Temp.	3500K, 4000K, 5000K
Lumen Output	2,600 - 10,400
Input Wattage	30w - 120w



MD2IG-4190
**Medical Patient
 Ambient/Exam LED**

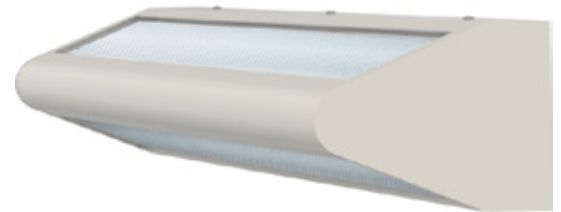
Recessed Grid Inset Door

Applications

- Patient Bed
- Doctor Examination
- Nursing Homes

Specifications

Size	2x4
CRI	80 - 89
Color Temp.	3500K, 4000K
Lumen Output	11,800 - 15,300
Input Wattage	111w - 153w



MDWB-3587
**Medical Patient
 Bidirectional LED**

Surface Wall Mount

Applications

- Patient Bed
- Hallway
- Stairwell

Specifications

Size	24", 48"
CRI	80 - 89
Color Temp.	3500K, 4000K, 5000K
Lumen Output	2,600 - 7,800
Input Wattage	30w - 90w

MD3G-4103
**Medical Patient Reading/
 Ambient/Exam LED**
 Recessed Grid Mount

Applications

- Hospitals
- Nursing Homes
- Patient Care Facilities



Specifications

Size	2x4
CRI	80 - 89
Color Temp.	3500K, 4000K
Lumen Output	11,900 - 15,600
Input Wattage	122w - 167w

Three LED Compartments:

- 1 Exam
- 2 Ambient
- 3 Reading

Quality Construction
 Precision formed, code gauge cold rolled steel housing with optional anti-microbial finish.

Barrier Between The Plenum & Room
 The sealed housing minimizes leakage and intrusion of particles into the environment.

Appeal & Continuity
 The MD3's ambient compartment features a selection of Visioneering 2x2 LRT Series luminaires. This option provides glare-free comfort and design continuity throughout facilities with similar LRT luminaires installed.



Options
 Low Voltage Controller



CLEANROOM

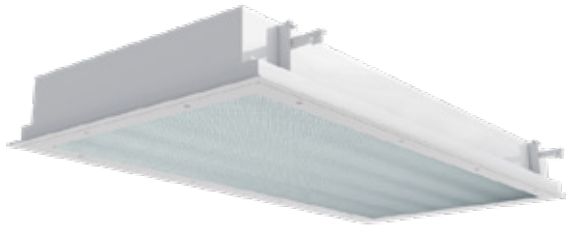
Certolux cleanroom luminaires are built to withstand negatively and positively pressured environments. They resist particle transfer from the room or the plenum through the luminaire. Certolux luminaires are designed to allow for easy maintenance and cleaning while providing reliability in the most stringent applications.

All recessed LED Cleanroom luminaires are IC-Rated.

Not all certifications are standard. Consult Spec Sheet for configuration options.



CR / RECESSED



CRU
Cleanroom LED
Recessed Universal
Inset Door
Suitable for ISO Class 3 - 8

Specifications	
Size	1x4, 2x2, 2x4
CRI	80 - 89
Color Temp.	3000K, 3500K, 4000K, 5000K
Lumen Output	3,500 - 24,000
Input Wattage	32w - 198w

Applications

- Cleanrooms
- Food Processing
- Laboratories



CRG-3522
Cleanroom LED
Recessed Grid
Suitable for ISO Class 5 - 8

Specifications	
Size	1x4, 2x2, 2x4
CRI	80 - 89
Color Temp.	3500K, 4000K, 5000K
Lumen Output	2,600 - 15,000
Input Wattage	25w - 147w

Applications

- Cleanrooms
- Food Processing
- Laboratories



SAF-3518
Superseal Alpha Flanged
Cleanroom LED
Recessed Flanged
Suitable for ISO Class 4 - 8

Specifications	
Size	1x4, 2x2, 2x4
CRI	80 - 89
Color Temp.	3500K, 4000K, 5000K
Lumen Output	2,600 - 15,000
Input Wattage	25w - 147w

Applications

- Cleanrooms
- Food Processing
- Laboratories

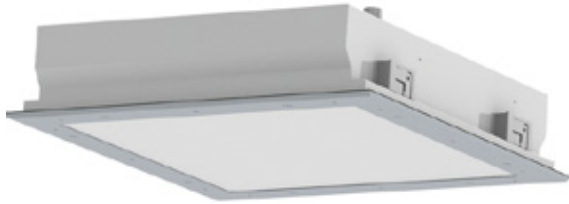


SAFR-4004
Superseal Alpha
Flanged Cleanroom LED
Recessed Flanged Rear Access
Suitable for ISO Class 4 - 8

Specifications	
Size	1x4, 2x2, 2x4
CRI	80 - 89
Color Temp.	3500K, 4000K, 5000K
Lumen Output	2,600 - 15,000
Input Wattage	25w - 147w

Applications

- Cleanrooms
- Food Processing
- Laboratories



SAFG-3755
Superseal Alpha Flanged
Cleanroom LED

Recessed Grid Flanged
Suitable for ISO Class 4 - 8

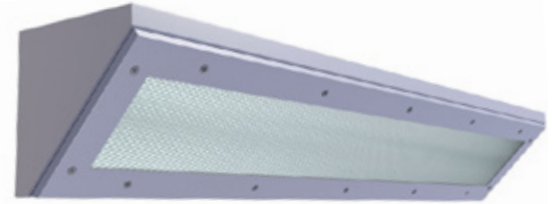
Applications

- Cleanrooms
- Food Processing
- Laboratories



Specifications

Size	1x4, 2x2, 2x4
CRI	80 - 89
Color Temp.	3500K, 4000K, 5000K
Lumen Output	2,600 - 15,000
Input Wattage	25w - 147w



CRC-3519
Cleanroom LED

Corner Mount
Suitable for ISO Class 4 - 8

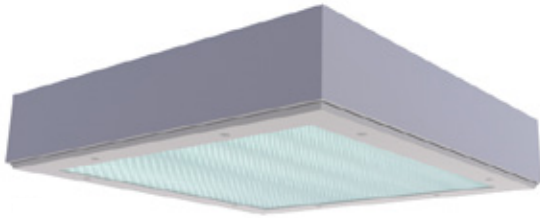
Applications

- Cleanrooms
- Food Processing
- Laboratories



Specifications

Size	24", 48"
CRI	80 - 89
Color Temp.	3500K, 4000K, 5000K
Lumen Output	2,600 - 10,400
Input Wattage	25w - 98w



CRS-3555
Cleanroom LED

Surface Mount
Suitable for ISO Class 5 - 8

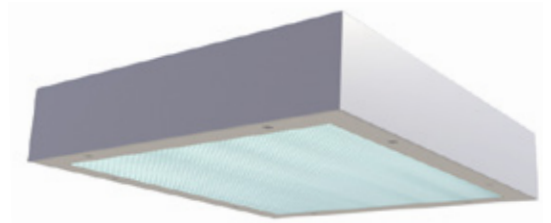
Applications

- Cleanrooms
- Food Processing
- Laboratories



Specifications

Size	1x2, 1x4, 2x2, 2x4
CRI	80 - 89
Color Temp.	3500K, 4000K, 5000K
Lumen Output	2,600 - 15,000
Input Wattage	25w - 98w



CRIS-3525
Cleanroom LED

Surface Mount Inset Door
Suitable for ISO Class 5 - 8

Applications

- Cleanrooms
- Food Processing
- Laboratories



Specifications

Size	1x1, 1x4, 2x2, 2x4
CRI	80 - 89
Color Temp.	3500K, 4000K, 5000K
Lumen Output	925 - 15,000
Input Wattage	9w - 147w



CRTD-3523
Tear Drop
Cleanroom LED

Surface Mount
Suitable for ISO Class 4 - 8

Applications

- Cleanrooms
- Food Processing
- Laboratories



Specifications

Size	24", 48", 96"
CRI	80 - 89
Color Temp.	3000K, 3500K, 4000K, 5000K
Lumen Output	2,600 - 10,400
Input Wattage	25w - 98w



Frosted
Lens
Option
Shown

CRV
Cleanroom LED

Surface Mount
Suitable for ISO Class 4 - 8

Applications

- Agriculture
- Swimming Pools
- Car Washes
- Parking Garages
- Food Processing



Specifications

Size	24", 48", 96"
CRI	80 - 89
Color Temp.	3500K, 4000K, 5000K
Lumen Output	2,200 - 20,000
Input Wattage	20w - 164w

VANDAL RESISTANT

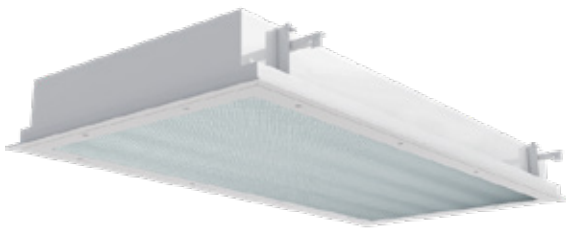
Certolux vandal resistant luminaires are ideally suited for security and highly abusive applications. With concealed hinges, tamper resistant fasteners, lenses up to .625" thick, and contraband trapping backplates, our fixtures withstand tampering and attempts of concealment. Our LED family of vandal resistant products is durable, long lasting and provides enhanced performance with reduced maintenance.

All recessed LED Vandal Resistant luminaires are IC-Rated.

Not all certifications are standard. Consult Spec Sheet for configuration options.



VR / RECESSED



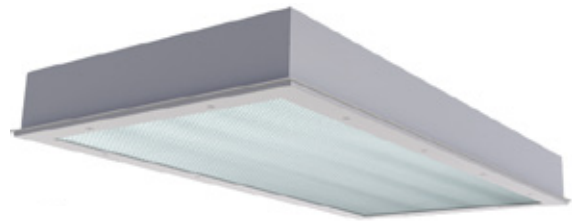
VRU
Vandal Resistant LED
Recessed Universal
Inset or Overlap Door



- Applications**
- Public Areas
 - Transit
 - Hallways
 - Community Centres
 - Court Houses
 - Day Rooms

Specifications

Size	1x4, 2x2, 2x4
CRI	80 - 89
Color Temp.	3500K, 4000K, 5000K
Lumen Output	3,500 - 24,000
Input Wattage	33w - 201w



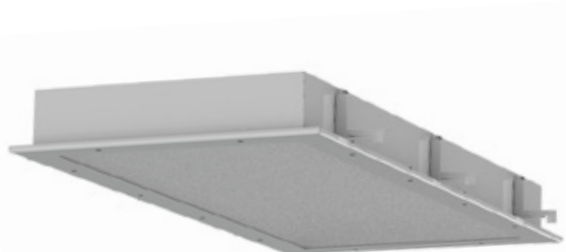
VRF-3553
Confinement LED
Recessed Flanged



- Applications**
- Public Areas
 - Transit
 - Hallways
 - Community Centres
 - Court Houses
 - Day Rooms

Specifications

Size	1x2, 1x4, 2x2, 2x4
CRI	80 - 89
Color Temp.	3500K, 4000K, 5000K
Lumen Output	2,600 - 15,000
Input Wattage	25w - 147w



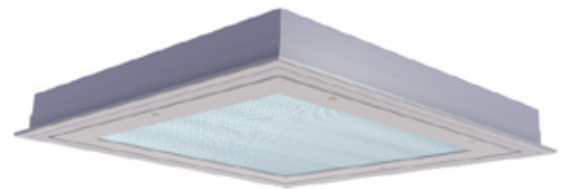
VRF-3836
Confinement LED
Recessed Flanged with
Swing Arms



- Applications**
- Public Areas
 - Transit
 - Hallways
 - Community Centres
 - Court Houses
 - Day Rooms

Specifications

Size	1x4, 2x2, 2x4
CRI	80 - 89
Color Temp.	3000K, 3500K, 4000K, 5000K
Lumen Output	2,600 - 15,000
Input Wattage	25w - 147w



VRIF-3497
Confinement LED
Recessed Flange Inset Door



- Applications**
- Public Areas
 - Transit
 - Hallways
 - Community Centres
 - Court Houses
 - Day Rooms

Specifications

Size	1x4, 2x2, 2x4
CRI	80 - 89
Color Temp.	3000K, 3500K, 4000K, 5000K
Lumen Output	2,600 - 15,000
Input Wattage	25w - 147w



VRIF-4104
Behavioral Health LED
Recessed Flange Inset Door



Applications

- Public Areas
- Transit
- Hallways
- Community Centres
- Court Houses
- Day Rooms

Specifications

Size	2x2, 2x4
CRI	80 - 89
Color Temp.	3500K, 4000K
Lumen Output	3,300 - 7,800
Input Wattage	31w - 75w



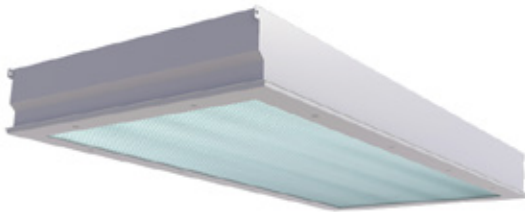
VRFW-4143
Confinement LED
Recessed Flanged

Applications

- Public Areas
- Transit
- Hallways
- Community Centres
- Court Houses
- Day Rooms

Specifications

Size	10"
CRI	80 - 89
Color Temp.	4000K
Lumen Output	500
Input Wattage	7w



VRG-3552
Confinement LED
Recessed Grid



Applications

- Public Areas
- Transit
- Hallways
- Community Centres
- Court Houses
- Day Rooms

Specifications

Size	1x4, 2x2, 2x4
CRI	80 - 89
Color Temp.	3000K, 3500K, 4000K, 5000K
Lumen Output	2,600 - 15,000
Input Wattage	25w - 147w



VRIG-4104
Behavioral Health LED
Recessed Grid Inset Door



Applications

- Public Areas
- Transit
- Hallways
- Community Centres
- Court Houses
- Day Rooms

Specifications

Size	2x2, 2x4
CRI	80 - 89
Color Temp.	3500K, 4000K
Lumen Output	3,300 - 7,800
Input Wattage	31w - 75w



VRS-3489
Confinement LED
Surface Mount
Clamshell Door with three
lenses

Applications

- Cells
- Day Rooms
- Corridors

Specifications

Size	1.5x2, 1.5x4
CRI	80 - 89
Color Temp.	3000K, 3500K, 4000K, 5000K
Lumen Output	2,600 - 10,400
Input Wattage	25w - 98w



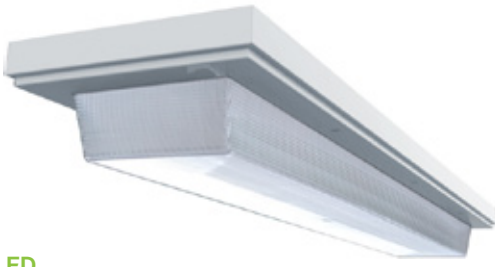
VRS-3492
Confinement LED
Surface Mount
Clamshell Door with two
lenses

Applications

- Cells
- Day Rooms
- Corridors

Specifications

Size	1x4
CRI	80 - 89
Color Temp.	3000K, 3500K, 4000K, 5000K
Lumen Output	2,600 - 10,400
Input Wattage	25w - 98w



**VRS-3586
Confinement LED**

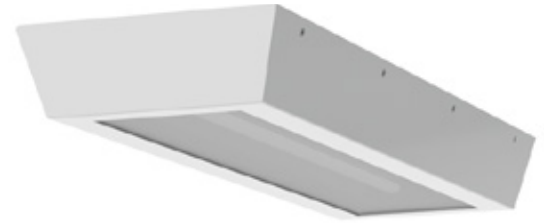
Surface Mount

Applications

- Public Areas
- Transit
- Hallways
- Community Centres
- Court Houses
- Day Rooms

Specifications

Size	24", 48"
CRI	80 - 89
Color Temp.	3000K, 3500K, 4000K, 5000K
Lumen Output	2,600 - 10,400
Input Wattage	15w - 120w



**VRS-4022
Confinement LED**

Surface Mount
Clamshell Door

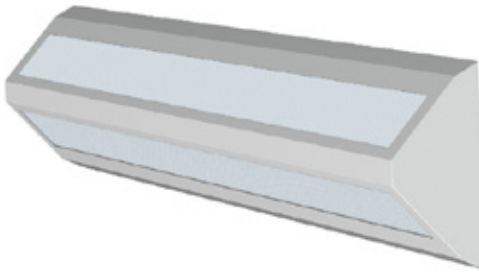
IP55

Applications

- Cells
- Day Rooms
- Corridors

Specifications

Size	1x2, 1x4, 2x4
CRI	80 - 89
Color Temp.	3000K, 3500K, 4000K, 5000K
Lumen Output	2,600 - 15,000
Input Wattage	25w - 147w



**VRS-4199
Confinement LED**

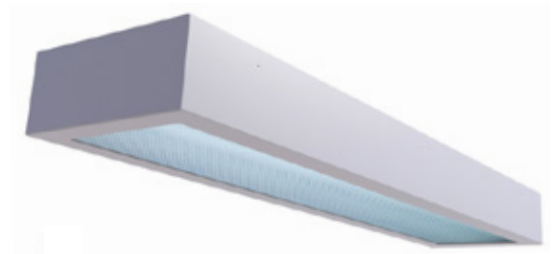
Surface Mount
Clamshell Door with two
lenses

Applications

- Cells
- Day Rooms
- Corridors

Specifications

Size	48"
CRI	80 - 89
Color Temp.	3000K, 3500K, 4000K, 5000K
Lumen Output	3,600 - 6,000
Input Wattage	34w - 55w



**VRS-3526
Confinement LED**

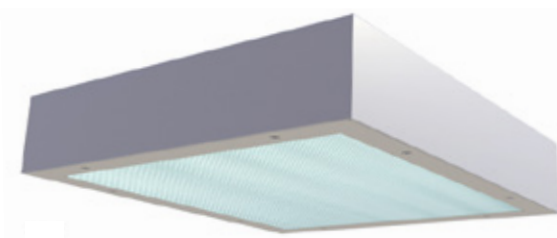
Surface Mount

Applications

- Cells
- Day Rooms
- Corridors

Specifications

Size	1x4
CRI	80 - 89
Color Temp.	3500K, 4000K, 5000K
Lumen Output	2,600 - 10,400
Input Wattage	30w - 120w



**VRIS-3525
Confinement LED**

Surface Mount Inset Door

Applications

- Cells
- Day Rooms
- Corridors

Specifications

Size	1x2, 1x4, 2x2, 2x4
CRI	80 - 89
Color Temp.	3500K, 4000K, 5000K
Lumen Output	2,600 - 15,000
Input Wattage	25w - 147w



**VRIS-3942
Confinement LED**

Surface Mount Inset Door
Angled Housing

Applications

- Cells
- Day Rooms
- Corridors

Specifications

Size	1x1, 1x2, 1x4
CRI	80 - 89
Color Temp.	3000K, 3500K, 4000K, 5000K
Lumen Output	925 - 6000
Input Wattage	9w - 69w



**VRC-3496
Confinement LED**

Corner Mount
Hinged Door



Specifications

Size	24", 48"
CRI	80 - 89
Color Temp.	3000K, 3500K, 4000K, 5000K
Lumen Output	2,600 - 10,400
Input Wattage	25w - 98w

Applications

- Cells
- Day Rooms
- Corridors



**VRC-3524
Confinement LED**

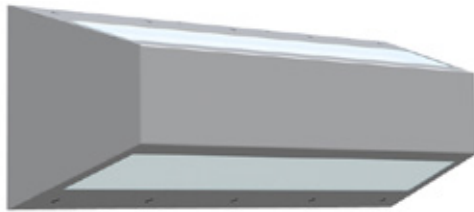
Corner Mount
Clamshell Door

Specifications

Size	24", 48"
CRI	80 - 89
Color Temp.	3000K, 3500K, 4000K, 5000K
Lumen Output	2,600 - 10,400
Input Wattage	25w - 98w

Applications

- Cells
- Day Rooms
- Corridors



**VRW-3591
Confinement LED**

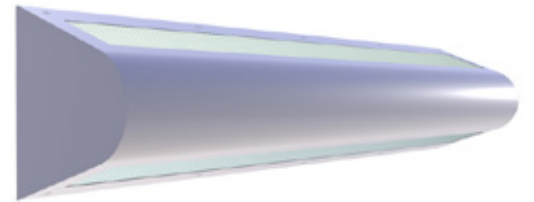
Surface Wall Mount
Clamshell Door

Specifications

Size	48"
CRI	80 - 89
Color Temp.	4000K, 5000K
Lumen Output	4,000, 5,000
Input Wattage	36w, 46w

Applications

- Cells
- Day Rooms
- Corridors



**VRWB-3551
Confinement LED**

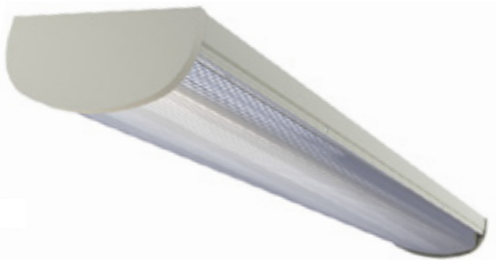
Surface Wall Mount
Bullnose Clamshell Door

Specifications

Size	1x2, 1x4
CRI	80 - 89
Color Temp.	3500K, 4000K, 5000K
Lumen Output	3,900 - 10,400
Input Wattage	36w - 98w

Applications

- Psychiatric Wards
- Cells
- Washrooms



**VRSE-3556
Architectural Vandal
Resistant LED**

Surface Mount



Specifications

Size	24", 48", 48"/2
CRI	80 - 89
Color Temp.	3000K, 3500K, 4000K, 5000K
Lumen Output	2,400 - 9,600
Input Wattage	22w - 88w

Applications

- Public Areas
- Transit
- Hallways
- Community Centres
- Court Houses
- Day Rooms





Viscor Inc.

35 Oak St., Toronto, ON M9N 1A1

tel 416-245-7991 **fax** 416-245-4778

customer service line (8:30AM–5:00PM EST Monday–Friday)

Visit our website at **www.viscor.com**