



Dividers

Lumetta's tastefully designed
Suspended Lumenate® Dividers are an
attractive way of making social distancing
and space management safe, comfortable
and beautiful—all at once.





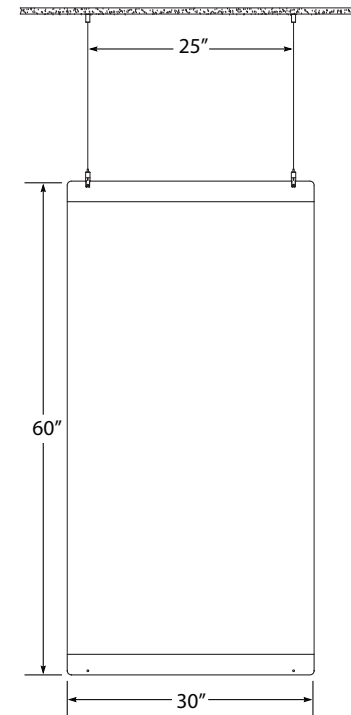
Product Details:

Suspended Luminate® Divider panels are antimicrobial and can easily be cleaned with any commercial cleaner.

Includes powder coated steel frame, 2 adjustable steel suspension cables and user-friendly mounting hardware.

Suitable for damp locations.

Dimensions: 30" W x 60" H

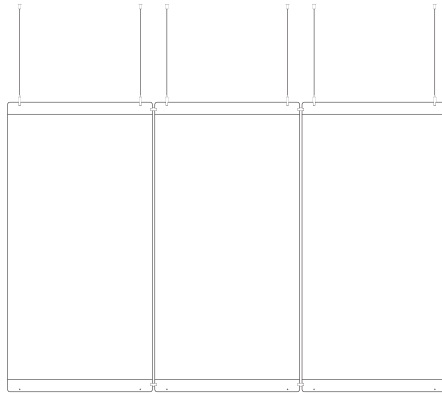




Configurations

Can be Joined for Longer Lengths

Our standard 30" x 60" dividers can be joined from side-to-side to form a 5' x 5' panel (or arrays of longer lengths in 30" increments).



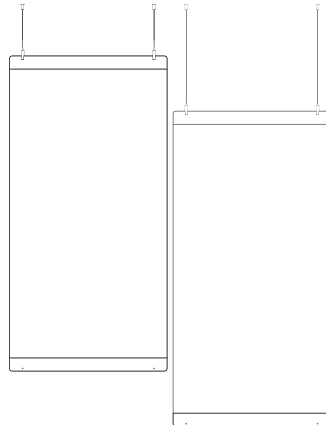
Can be Ceiling Hung and Floor Mounted

These innovative dividers can be hung from the ceiling and mounted to the floor (table, desk, etc.) for additional support if required.



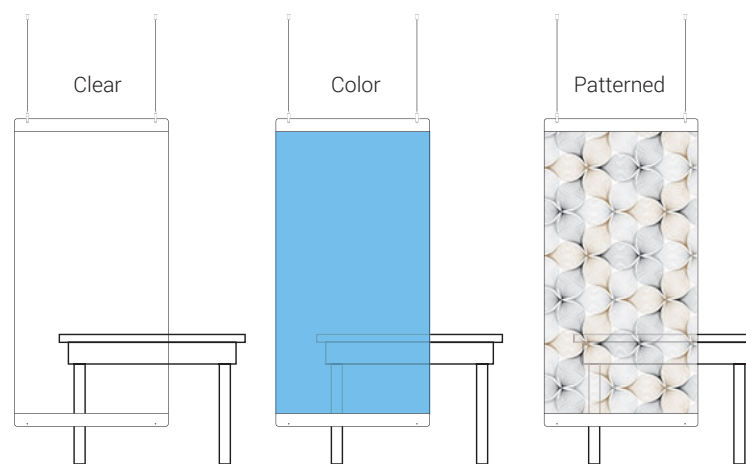
Adjustable Heights

Stagger divider heights to accommodate for optimal clearance of variable heights as well as visual interest.



Clear, Color or Patterned

Chose from our selection of clear, color or patterned panels to enhance your arena.





Choose Your Panel Design and Frame Finish

Available Lumenate® Panels:



DS001 Divider Clear Matte



DS002 Divider Clear Gloss



DS003 Divider Jasper



DS004 Divider Dixie



DS005 Divider Warm



DS006 Divider Gold



DS007 Divider Cool



DS008 Divider Grey



DS009 Divider Grid



DS010 Divider Opal



DS011 Divider Mystic



DS012 Divider Turquoise



DS013 Divider Kiwi



DS014 Divider Sapphire



DS015 Divider Fuchsia



DS016 Divider Coral



DS017 Divider Ruby



DS018 Divider Navy



DS019 Divider Onyx



DS020 Divider Ornament



DS021 Divider Intertwine Tan



DS022 Divider Leaf

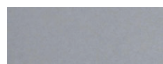


DS023 Divider Delta



DS024 Divider Abstract Floral

Available Finishes:



F2 Chrome



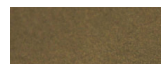
F3 Black



F4 Earth



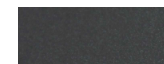
F5 Copper



F6 Brass



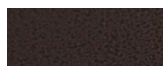
F7 Bronze



F8 Steel



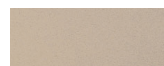
F11 White



*F10 Hammered Copper



*F13 Polo



*F14 Sandstone



*F15 Galaxy



*F16 Cyan

**Premium Finishes (contact factory for pricing)*



Suspended Lumenate® Dividers

Lumetta's new mood-enhancing suspended divider collections make social distancing and space management safe, comfortable and beautiful--all at once.

The surface of our flexible, protective panels is infused with antimicrobial germ- and virus-free technology and can easily be cleaned with any commercial cleaner.

Now You Can:

- Increase employee and customer well-being with these versatile, custom-designed dividers and help ensure the health and safety of the public.
- Enhance space functionality, and achieve ultimate comfort and positivity when you tailor our dividers to your environment.

www.lumetta.com/collection/dividers/

